



# 1626

## Air

Peli understands that finding the right protection, with the perfect fit for your gear, is a priority. Peli™ Air began with long protection and quickly grew to offer you deep protection. The time has come to combine those two in order to create Peli's new Long/Deep Series. Gone are the days of dangerously forcing your equipment into the wrong size case or leaving it unprotected with no other options. With Peli's Long/Deep series, we've created the missing link so that no matter the demands of your gear, Peli has you covered.

- Automatic Pressure Equalization Valve - balances interior pressure, keeps water out
- Fold down overmolded handle
- Retractable extension trolley handle
- Stainless steel padlock protectors
- Business card holder
- Quiet Rolling Stainless-Steel Bearing Wheels
- Press and Pull™ Latches
- Super-light proprietary HPX2™ Polymer - up to 40% lighter
- Waterproof O-ring seal
- User-customizable Pick N Pluck™ foam
- Waterproof, crushproof, dustproof
- IP67 & MIL-SPEC certified
- Limited Lifetime Warranty (Where applicable by law)



### DIMENSIONS

<b>Interior (LxWxD)</b>	28.14 x 14.10" x 11.72 (71.5 x 35.8 x 29.8 cm)
<b>Exterior (LxWxD)</b>	31.12 x 17.05" x 13.33 (79 x 43.3 x 33.9 cm)
<b>Lid Depth</b>	2.00" (5.1 cm)
<b>Bottom Depth</b>	9.72" (24.7 cm)
<b>Total Depth</b>	11.72" (29.8 cm)
<b>Int Volume</b>	2.69 ft <sup>3</sup> (0.076 m <sup>3</sup> )
<b>Padlock Hole Diameter</b>	5/16" (12.7 cm)

### MATERIALS

<b>Body</b>	Proprietary Polypropylene Blend
<b>Latch</b>	ABS
<b>O-Ring</b>	EPDM
<b>Purge Body</b>	ABS
<b>Purge Vent</b>	Hi-Flow Gore-Tex 3 Micron Hydrophobic Non-Woven

### COLOURS

- Black

### WEIGHT

<b>Weight With Foam</b>	18.10 lbs (8.2 kg)
<b>Weight Empty</b>	14.65 lbs (6.6 kg)
<b>Buoyancy</b>	185.32 lbs (84.1 kg)

## TEMPERATURE

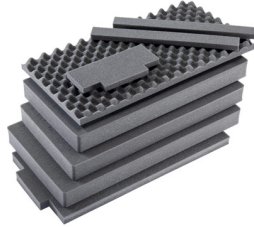
---

**Minimum Temperature** -60°F (-51.1 °C)

**Maximum Temperature** 160°F (71.1 °C)

## ACCESSORIES

---



**1626AirFS**  
8 pc. Replacement Foam Set

---

### **Peli**

c/ Provença, 388, Planta 7 • Barcelona, Spain 08025 • Phone: +34 934 674 999

[info@peli.com](mailto:info@peli.com) • [www.peli.com](http://www.peli.com)

*Document created on 01-05-23*